



when our **children succeed**  
the community succeeds

LEADERS UNITED for CHILDREN



**ROUNDTABLE OF ST. LUCIE COUNTY**

The Roundtable of St. Lucie County is a 501(c)3 organization comprised of 27 community agencies working together with partners and stakeholders throughout the community to address the issues our children face at the root level. Its members are leaders of all aspects of society who come together to build a community of opportunity where every child succeeds.

The Roundtable operates through networks, each of which focuses on one key aspect that affects the lives of our children.

**ECONOMIC SUFFICIENCY NETWORK**

Children deserve a chance to succeed. Because children from families with sufficient resources are freed from the stress and problems brought on by lack of finances, the Economic Sufficiency Network seeks to reduce the unemployment level and the number of children living in poverty, as well as improve the socioeconomic status of the community.

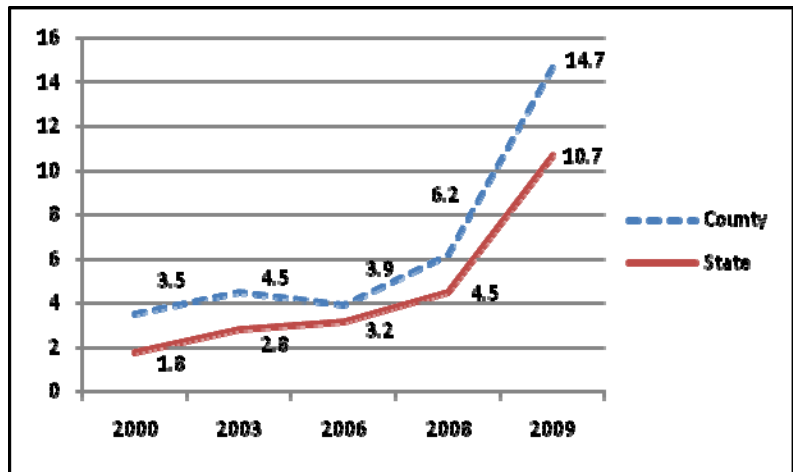
Contact us at:

**Christine Epps**  
Executive Director  
Roundtable of St. Lucie County, Inc.  
546 NW University Blvd.  
Port St. Lucie, FL 34986  
Phone: (772) 871-5880  
Fax: (772) 408-1111  
Email: [cepps@roundtableslc.org](mailto:cepps@roundtableslc.org)

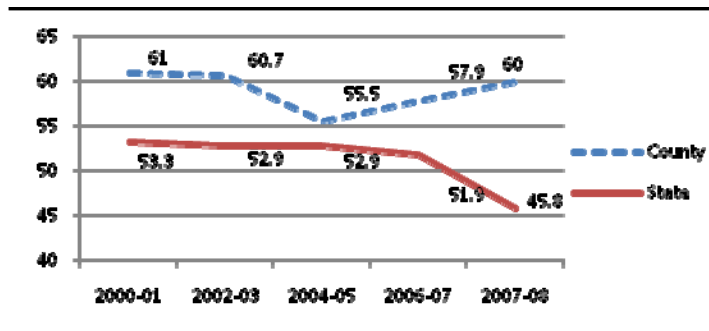
**Children deserve the best we have to offer. Food, clothes, school supplies, medical care...all of this is vitally important to their well-being. Because we believe that no child should suffer do to lack of financial resources....thus the Economic Sufficiency Network strives to improve the socioeconomic status of the community.**

**GOALS & OUTCOMES**

Reduce the unemployment level 10% by 2014



**Reduce the number of children living in poverty by 10% by 2014**

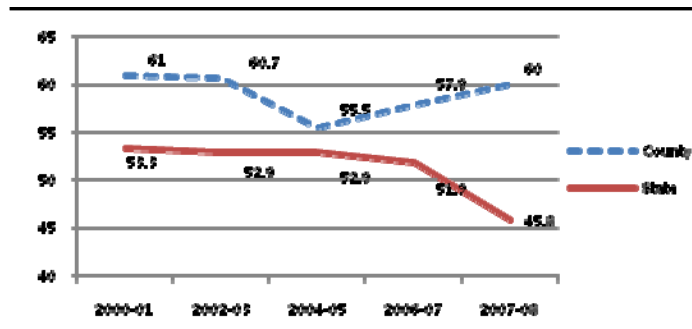


Families going through foreclosure not only suffer financial devastation but also experience marital difficulties and have to make major changes to plans involving their children.

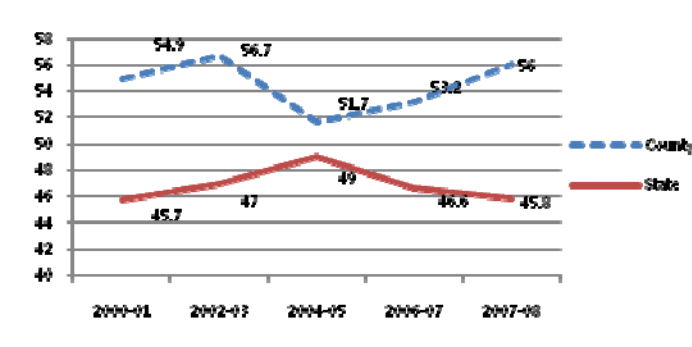
Children who experience instability in the home are more likely to have difficulty concentrating in school, while children who have to change schools as a result of foreclosure are traumatized with the loss of familiar surroundings and social networks.

Affected families are forced to rethink the feasibility of sending their children to college.

**Reduce the number of children K-5 receiving free/reduced lunch by 10% by 2014**



**Reduce the number of middle school children receiving free/reduced lunch by 10% by 2014**



**STRATEGIES**

**Bridges Out of Poverty** is an approach that helps employers, community organizations, social service agencies, and individuals address poverty in a comprehensive way. Participants learn ideas, structures, and concrete tools a community needs to prevent, alleviate, and reduce poverty.

The goal of the program is to help employers and directors to improve job retention rates, build resources, improve outcomes, and support those who are moving out of poverty.

**IN PROCESS:**

- Network formed to create strategy to reduce poverty in St. Lucie County.
- Training agencies, providers and businesses in the Ruby Payne Model: Bridges Out of Poverty.
- Building collaborations with businesses to support the success of the Ruby Payne model.